

CAPABILITIES STATEMENT

CONNECT WITH BGESH:

Headquarters: San Antonio, Texas

O: 210.497.1217 | www.bgesh.com

Charissa Halliburton, CEO | charissa@bgesh.com

Wes Halliburton, COO | wes@bgesh.com

SBA BOS POINT OF CONTACT:

Mr. Eric Spencer, Business Opportunity Specialist

San Antonio District Office

U.S. Small Business Administration

P: 210-403-5940 | eric.spencer@sba.gov

CERTIFICATIONS:

Federal: SBA 8(a) Certified

WOSB | EDWOSB | ISBEE

State & Local

ESBE | DBE | WBE | HUB | MBE | NABE

PAST PERFORMANCE:

- Federal Mediation & Conciliation Service (FMCS)
- U.S. Army Corps of Engineers (USACE)
- United States Air Force (USAF)
- Department of Interior (DOI)
- Bureau of Indian Affairs (BIA)
- Defense Health Agency (DHA)
- Health & Human Services (HHS)
- United States Department of Agriculture (USDA)
- United States Department of the Army (DA)

NAICS CODES:

- 519190 - All Other Information Services
- 541219 - Other Accounting Services
- 541512 - Computer Systems Design Services
- 541513 - Computer Facilities Management Services
- 541519 - Other Computer Related Services
- 541690 - Other Scientific and Technical Consulting Services
- 541990 - All Other Professional, Scientific, and Technical Services
- 561110 - Office Administrative Services
- 561210 - Facilities Support Services
- 561320 - Temporary Help Services
- 621999 - All Other Miscellaneous Ambulatory Health Care Services
- 237120 - Oil and Gas Pipeline & Related Structures Construction
- 541618 - Other Management Consulting Services



BGESH
INCORPORATED

A Native American Owned Company

*Bgesh provides unique **SOLUTIONS** enabling **YOU** to meet your mission.*

CAPABILITIES:



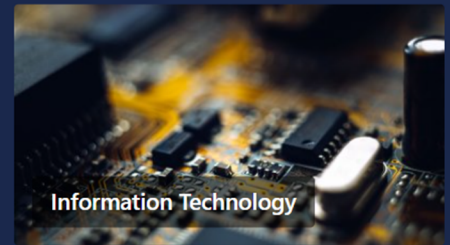
Consulting & Staff Augmentation



Professional & Managed Services



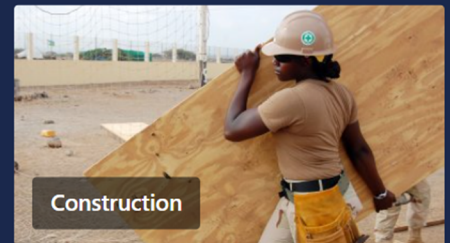
Operations & Maintenance



Information Technology



Security Solutions



Construction



Healthcare



Facilities & Infrastructure

Credit Cards Accepted

Registered Member of the Disaster Response Registry

Providing Innovative Solutions

Cage Code: 686W3

DUNS NUMBER: 965463610

SAM Unique Entity ID: HKEXMP55KEG6

CAPABILITIES STATEMENT



BGESH
INCORPORATED

A Native American Owned Company

*Bgesh provides unique **SOLUTIONS**
enabling **YOU** to meet your mission.*

CONNECT WITH BGESH:

Headquarters: San Antonio, Texas

O: 210.497.1217 | www.bgesh.com

Charissa Halliburton, CEO | charissa@bgesh.com

Wes Halliburton, COO | wes@bgesh.com

SBA BOS POINT OF CONTACT:

Mr. Eric Spencer

Business Opportunity Specialist

San Antonio District Office

U.S. Small Business Administration

P: 210-403-5940 | eric.spencer@sba.gov

CERTIFICATIONS:

Federal: SBA 8(a) Certified

WOSB | EDWOSB | ISBEE

State & Local

ESBE | DBE | WBE | HUB | MBE | NABE

AWARDS:

2024: 3D U.S. Infantry Regiment "The Old Guard",
Certificate of Appreciation

2023: Contracting Excellence

2021: Minority Emerging Technology Firm of the Year

2019: Contracting Excellence

NAICS CODES:

- 541690 - Other Scientific and Technical Consulting Services
- 519190 - All Other Information Services
- 541219 - Other Accounting Services
- 541512 - Computer Systems Design Services
- 541513 - Computer Facilities Management Services
- 541519 - Other Computer Related Services
- 541990 - All Other Professional, Scientific, and Technical Services
- 561110 - Office Administrative Services
- 561320 - Temporary Help Services
- 621999 - All Other Miscellaneous Ambulatory Health Care Services
- 541618 - Other Management Consulting Services
- 561990 - All Other Support Services

CORE COMPETENCIES:

CONSULTING & STAFF AUGMENTATION

- * Project Management
- * Process and Policy Development & Implementation
- * Human Resources Support
- * Staff Augmentation
- * Administrative Support Services
- * Comprehensive Business Continuity

PROFESSIONAL SERVICES

- * Program Management
- * Policy & Process Development
- * Earned Value Management (EVM)
- * Strategic Planning
- * Technical & Scientific Support
- * Performance Management
- * Human Resource Management

IT SERVICES

- * IT Systems Integration
- * Modernization
- * Network Operations Center Staff Augmentation to include Monitoring and Analysis
- * Forensic Level Data Recovery & Analysis
- * Enterprise IT Support
- * Configuration Management

SECURITY SOLUTIONS

- * InfoSec, Cyber, & Physical Security
- * Plan of Action & Milestone (POA&M)
- * Vulnerability Assessments
- * Compliance Assessments
- * Assessment and Authorization (A&A)
- * Risk Management Framework (RMF)
- * Certification and Accreditation (C&A)
- * Gap Analysis
- * Extraction Services

MANAGED SERVICES

- * Recruitment Process Outsourcing
- * Network Operations Center (NOC)
- * Financial Management
- * Operations Transformation
- * Project-based Assistance
- * Cyber Security Operations Center (CSOC)
- * Managed Accounting Services

HEALTHCARE

- * All Ancillary Medical Specialties
- * Health IT
- * Case Management
- * Mental Health
- * Biomedical Research
- * Beneficiary Services
- * Staff Augmentation
- * Database & Financial Management

Credit Cards Accepted

Registered Member of the Disaster Response Registry

Providing Innovative Solutions

Cage Code: 686W3

DUNS NUMBER: 965463610

SAM Unique Entity ID: HKEXMP55KEG6

CAPABILITIES STATEMENT

CONNECT WITH BGESH:

Headquarters: San Antonio, Texas

O: 210.497.1217 | www.bgesh.com

Charissa Halliburton, CEO | charissa@bgesh.com

Wes Halliburton, COO | wes@bgesh.com

SBA BOS POINT OF CONTACT:

Mr. Eric Spencer, Business Opportunity Specialist
San Antonio District Office
U.S. Small Business Administration
P: 210-403-5940 | eric.spencer@sba.gov

CERTIFICATIONS:

Federal: SBA 8(a) Certified

WOSB | EDWOSB | ISBEE

State & Local

ESBE | DBE | WBE | HUB | MBE | NABE

PAST PERFORMANCE:

- Federal Mediation & Conciliation Service (FMCS)
- U.S. Army Corps of Engineers (USACE)
- United States Air Force (USAF)
- Department of Interior (DOI)
- Bureau of Indian Affairs (BIA)
- Defense Health Agency (DHA)
- Health & Human Services (HHS)
- United States Department of Agriculture (USDA)
- United States Department of the Army (DA)

NAICS CODES:

- 236220 - Commercial and Institutional Building Construction
- 237110 - Water and Sewer Line & Related Structures Construction
- 237120 - Oil and Gas Pipeline & Related Structures Construction
- 561210 - Facilities Support Services
- 238120 - Structural Steel & Precast Concrete Contractors
- 541330 - Engineering Services
- 541620 - Environmental Consulting Services
- 541715 - Research and Development in the Physical, Engineering, and Life Sciences
- 562910 - Remediation Services
- 541714 - Research & Development in Biotechnology
- 541614 - Process, Physical Distribution & Logistics Consulting Services



BGESH
INCORPORATED

A Native American Owned Company

*Bgesh provides unique **SOLUTIONS**
enabling **YOU** to meet your mission.*

SUPPLEMENTAL CAPABILITIES:

OPERATIONS & MAINTENANCE

- * Fuel System Maintenance
- * HVAC Maintenance and Repair
- * Electrical System Improvements
- * Environmental O&M Systems
- * Base Operating Support
- * Custodial Services
- * Energy Survey Management
- * Roof Facility Survey & Maintenance

CONSTRUCTION

- * Construction Management
- * Military Fuel Systems
- * Site and Facility Demolition
- * General Contracting
- * Pre-Construction Programming and Planning
- * Design-Build
- * Design-Bid-Build

FACILITIES & INFRASTRUCTURE

- * Emergency Response
- * Building Renovation
- * Facility Assessment
- * IT Systems Integration
- * Logistics & Transportation
- * HEMP Facility Protection

ENGINEERING SOLUTIONS

- * Mechanical Engineering
- * Electrical Engineering
- * Software Engineering
- * Plumbing Engineering
- * Municipal Engineering
- * Wetland & Environmental
- * Structural Engineering

RESEARCH & DEVELOPMENT

- * Technology Surveillance
- * Resource Management
- * Bioterrorism Surveillance
- * Design & Implementation Studies
- * Behavioral Analysis
- * Biomedical Research

ENVIRONMENTAL

- * Environmental O&M Systems
- * Remediation
- * Environmental Construction Monitoring
- * Water Resource Management
- * Permaculture Design
- * Natural Resource Management
- * Programmatic Environmental Consulting

Credit Cards Accepted

Registered Member of the Disaster Response Registry

Providing Innovative Solutions

Cage Code: 686W3

DUNS NUMBER: 965463610

SAM Unique Entity ID: HKEXMP55KEG6

YOUR MISSION IS OUR MISSION.

LET BGESH SERVE AND SUPPORT YOU.

OUR CORE SOLUTIONS ARE CUSTOMIZED TO

YOUR SPECIFIC NEEDS ACROSS:

HEALTHCARE SERVICES & STAFFING
PROFESSIONAL & MANAGED SERVICES
INFOSEC, CYBER, & PHYSICAL SECURITY
OPERATIONS & MAINTENANCE
INFORMATION TECHNOLOGY
CONSTRUCTION, FACILITIES & INFRASTRUCTURE
CONSULTING & STAFF AUGMENTATION

OUR VISION: WABJEGAZE

A future where our community is **protected** from harm and its people are **employed** and **financially secure**.

OUR MISSION:

To **reduce risk** for our clients by offering exceptional service with **integrity, diligence,** and **fruitful communication**.

THE CORE VALUE:

THE "GOLDEN RULE"

This is the beating heart of our organization.

How we do this:

- Communicate in an Open, Honest, & Fruitful way.
- Be a part of the Solution.
- Maintain a character of Integrity.
- Always Be Learning
- Respect and Edify others.
- Be Innovative while striving for Efficiency.

BGESH IS COMMITTED TO:

- Integrity in all we say and do!
- Delivering exceptional program management!
- Responding promptly to requests!
- Providing solutions to complete your mission!
- Mitigating risk for our clients!
- Providing extraordinary customer service!



BGESH
INCORPORATED

A Native American Owned Company

WHY BGESH?

DEDICATED PROGRAM MANAGEMENT

Friendly, hard-working PMs who show integrity, professionalism, and determination supporting you and your mission.

EXCEPTIONAL IN-HOUSE RECRUITING

Prospering our team and building integrity.
We know what it takes to put together a great team.

POWERFUL TEAM FOCUS

We want you to have the confidence and peace of mind that we do here at Bgesh, knowing that we have friendly, hard-working team people who show integrity, professionalism, and determination.

THE GOLDEN RULE

We consider excellent service to be of utmost importance. We value ongoing and constant communication with our clients. Our team takes the initiative to assess a need, generate a proactive plan, and provide a cost-effective solution for our clients.

MORE REASONS...

Bgesh, Incorporated understands the challenges our clients face when working with small businesses. We've structured our company to provide an organization that provides many unique advantages:

- * **DÉBASKÉ | OUR IMPACT PROGRAM—LIVING OUT OUR VISION**
- * **FINANCIALLY-STABLE BUSINESS**
- * **GEOGRAPHICALLY-DISPERSED OFFICES**
- * **AVERAGE 16+ YEARS PERSONNEL EXPERIENCE**
- * **DCAA-COMPLIANT ACCOUNTING SYSTEMS**
- * **ACCESS VIA 8(A) AND WOMAN OWNED SMALL BUSINESS (WOSB) SET ASIDES AND THE NATIVE AMERICAN INDIAN SMALL BUSINESS ECONOMIC ENTERPRISE (ISBEE) SET ASIDE.**
- * **10% OF PRE-TAX EARNINGS DONATED DIRECTLY TO THE BGESH FOUNDATION.**

The word "**Bgesh**" in the Potawatomi language means "**hope**".

*We Live & Work by the Golden Rule:
"Treat Others as You Want to Be Treated."*