

# CAPABILITIES STATEMENT

## CONTACT:

Charissa Halliburton, CEO  
Headquarters: San Antonio, Texas  
charissa@bgesh.com | O: 210.497.1217

Wes Halliburton, COO  
Headquarters: San Antonio, Texas  
wes@bgesh.com | O: 210.497.1217

[www.bgesh.com](http://www.bgesh.com)

## CERTIFICATIONS:

**Federal: SBA 8(a) Certified**

WOSB | EDWOSB | ISBEE

**State & Local**

ESBE | DBE | WBE | HUB | MBE | NABE

## PAST PERFORMANCE:

- Federal Mediation & Conciliation Service (FMCS)
- U.S. Army Corps of Engineers (USACE)
- United States Air Force (USAF)
- Department of Interior (DOI)
- Bureau of Indian Affairs (BIA)
- Defense Health Agency (DHA)
- Health & Human Services (HHS)
- United States Department of Agriculture (USDA)

## NAICS CODES:

- 519190 - All Other Information Services
- 541219 - Other Accounting Services
- 541512 - Computer Systems Design Services
- 541513 - Computer Facilities Management Services
- 541519 - Other Computer Related Services
- 541690 - Other Scientific and Technical Consulting Services
- 541990 - All Other Professional, Scientific, and Technical Services
- 561110 - Office Administrative Services
- 561210 - Facilities Support Services
- 561320 - Temporary Help Services
- 621999 - All Other Miscellaneous Ambulatory Health Care Services
- 237120 - Oil and Gas Pipeline & Related Structures Construction
- 541618 - Other Management Consulting Services



**BGESH**  
**INCORPORATED**

*A Native American Owned Company*

*Bgesh provides unique **SOLUTIONS** enabling **YOU** to meet your mission.*

## CAPABILITIES:



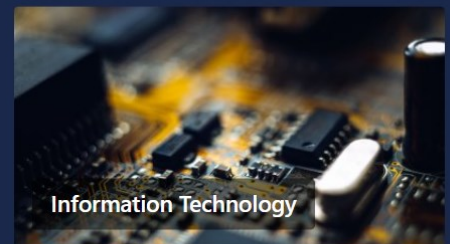
Consulting & Staff Augmentation



Professional & Managed Services



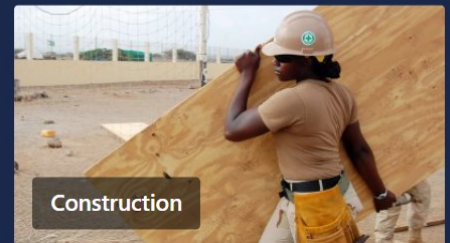
Operations & Maintenance



Information Technology



Security Solutions



Construction



Healthcare



Facilities & Infrastructure

**Credit Cards Accepted**

*Registered Member of the Disaster Response Registry*

**Providing Innovative Solutions**

Cage Code: 686W3  
DUNS NUMBER: 965463610  
SAM Unique Entity ID: HKEXMP55KEG6

# CAPABILITIES STATEMENT

## CONTACT:

Charissa Halliburton, CEO  
Headquarters: San Antonio, Texas  
charissa@bgesh.com | O: 210.497.1217

Wes Halliburton, COO  
Headquarters: San Antonio, Texas  
wes@bgesh.com | O: 210.497.1217

[www.bgesh.com](http://www.bgesh.com)

## CERTIFICATIONS:

**Federal: SBA 8(a) Certified**

WOSB | EDWOSB | ISBEE

**State & Local**

ESBE | DBE | WBE | HUB | MBE | NABE

## AWARDS:

- Minority Emerging Technology Firm of the Year
- Contracting Excellence

## NAICS CODES:

- 541690 - Other Scientific and Technical Consulting Services
- 519190 - All Other Information Services
- 541219 - Other Accounting Services
- 541512 - Computer Systems Design Services
- 541513 - Computer Facilities Management Services
- 541519 - Other Computer Related Services
- 541990 - All Other Professional, Scientific, and Technical Services
- 561110 - Office Administrative Services
- 561320 - Temporary Help Services
- 621999 - All Other Miscellaneous Ambulatory Health Care Services
- 541618 - Other Management Consulting Services
- 561621—Security Guards and Patrol Services
- 561990 - All Other Support Services



**BGESH**  
**INCORPORATED**

*A Native American Owned Company*

*Bgesh provides unique **SOLUTIONS**  
enabling **YOU** to meet your mission.*

## CORE COMPETENCIES:

### CONSULTING & STAFF AUGMENTATION

- \* Project Management
- \* Process and Policy Development & Implementation
- \* Human Resources Support
- \* Staff Augmentation
- \* Administrative Support Services
- \* Comprehensive Business Continuity

### PROFESSIONAL SERVICES

- \* Program Management
- \* Policy & Process Development
- \* Earned Value Management (EVM)
- \* Strategic Planning
- \* Technical & Scientific Support
- \* Performance Management
- \* Human Resource Management

### IT SERVICES

- \* IT Systems Integration
- \* Modernization
- \* Network Operations Center Staff Augmentation to include Monitoring and Analysis,
- \* Forensic Level Data Recovery & Analysis
- \* Enterprise IT Support
- \* Configuration Management

### SECURITY SOLUTIONS

- \* InfoSec, Cyber, & Physical Security
- \* Plan of Action & Milestone (POA&M)
- \* Vulnerability Assessments
- \* Compliance Assessments
- \* Assessment and Authorization (A&A)
- \* Risk Management Framework (RMF)
- \* Certification and Accreditation (C&A)
- \* Gap Analysis
- \* Extraction Services

### MANAGED SERVICES

- \* Recruitment Process Outsourcing
- \* Network Operations Center (NOC)
- \* Financial Management
- \* Operations Transformation
- \* Project-based Assistance
- \* Cyber Security Operations Center (CSOC)
- \* Managed Accounting Services

### HEALTHCARE

- \* All Ancillary Medical Specialties
- \* Health IT
- \* Case Management
- \* Mental Health
- \* Biomedical Research
- \* Beneficiary Services
- \* Staff Augmentation
- \* Database & Financial Management

**Credit Cards Accepted**

*Registered Member of the Disaster Response Registry*

**Providing Innovative Solutions**

Cage Code: 686W3  
DUNS NUMBER: 965463610  
SAM Unique Entity ID: HKEXMP55KEG6

# CAPABILITIES STATEMENT

## CONTACT:

Charissa Halliburton, CEO  
Headquarters: San Antonio, Texas  
charissa@bgesh.com | O: 210.497.1217

Wes Halliburton, COO  
Headquarters: San Antonio, Texas  
wes@bgesh.com | O: 210.497.1217

[www.bgesh.com](http://www.bgesh.com)

## CERTIFICATIONS:

**Federal: SBA 8(a) Certified**

WOSB | EDWOSB | ISBEE

**State & Local**

ESBE | DBE | WBE | HUB | MBE | NABE

## PAST PERFORMANCE:

- Federal Mediation & Conciliation Service (FMCS)
- U.S. Army Corps of Engineers (USACE)
- United States Air Force (USAF)
- Department of Interior (DOI)
- Bureau of Indian Affairs (BIA)
- Defense Health Agency (DHA)
- Health & Human Services (HHS)
- United States Department of Agriculture (USDA)

## NAICS CODES:

- 236220 - Commercial and Institutional Building Construction
- 237110 - Water and Sewer Line & Related Structures Construction
- 237120 - Oil and Gas Pipeline & Related Structures Construction
- 561210 - Facilities Support Services
- 238120 - Structural Steel & Precast Concrete Contractors
- 541330 - Engineering Services
- 541620 - Environmental Consulting Services
- 541715 - Research and Development in the Physical, Engineering, and Life Sciences
- 562910 - Remediation Services
- 541714 - Research & Development in Biotechnology
- 541614 - Process, Physical Distribution & Logistics Consulting Services



**BGESH**  
**INCORPORATED**

*A Native American Owned Company*

*Bgesh provides unique **SOLUTIONS**  
enabling **YOU** to meet your mission.*

## SUPPLEMENTAL CAPABILITIES:

### OPERATIONS & MAINTENANCE

- \* Fuel System Maintenance
- \* HVAC Maintenance and Repair
- \* Electrical System Improvements
- \* Environmental O&M Systems
- \* Base Operating Support
- \* Custodial Services
- \* Energy Survey Management
- \* Roof Facility Survey & Maintenance

### CONSTRUCTION

- \* Construction Management
- \* Military Fuel Systems
- \* Site and Facility Demolition
- \* General Contracting
- \* Pre-Construction Programming and Planning
- \* Design-Build
- \* Design-Bid-Build

### FACILITIES & INFRASTRUCTURE

- \* Emergency Response
- \* Building Renovation
- \* Facility Assessment
- \* IT Systems Integration
- \* Logistics & Transportation
- \* HEMP Facility Protection

### ENGINEERING SOLUTIONS

- \* Mechanical Engineering
- \* Electrical Engineering
- \* Software Engineering
- \* Plumbing Engineering
- \* Municipal Engineering
- \* Wetland & Environmental
- \* Structural Engineering

### RESEARCH & DEVELOPMENT

- \* Technology Surveillance
- \* Resource Management
- \* Bioterrorism Surveillance
- \* Design & Implementation Studies
- \* Behavioral Analysis
- \* Biomedical Research

### ENVIRONMENTAL

- \* Environmental O&M Systems
- \* Remediation
- \* Environmental Construction Monitoring
- \* Water Resource Management
- \* Permaculture Design
- \* Natural Resource Management
- \* Programmatic Environmental Consulting

**Credit Cards Accepted**

*Registered Member of the Disaster Response Registry*

**Providing Innovative Solutions**

Cage Code: 686W3

DUNS NUMBER: 965463610

SAM Unique Entity ID: HKEXMP55KEG6

**YOUR MISSION IS OUR MISSION.**

**LET BGESH SERVE AND SUPPORT YOU.**

**OUR CORE SOLUTIONS ARE CUSTOMIZED TO**

**YOUR SPECIFIC NEEDS ACROSS:**

PROFESSIONAL & MANAGED SERVICES  
INFOSEC, CYBER, & PHYSICAL SECURITY  
OPERATIONS & MAINTENANCE  
INFORMATION TECHNOLOGY & HEALTHCARE  
CONSTRUCTION, FACILITIES & INFRASTRUCTURE  
CONSULTING & STAFF AUGMENTATION

**OUR VISION: WABJEGAZE**

A future where our community is **protected** from harm and its people are **employed** and **financially secure**.

**OUR MISSION:**

To **reduce risk** for our clients by offering exceptional service with **integrity, diligence,** and **fruitful communication**.

**THE CORE VALUE:**

**THE "GOLDEN RULE"**

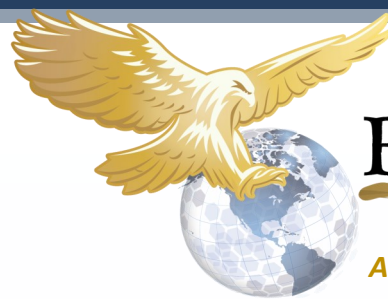
*This is the beating heart of our organization.*

**How we do this:**

- Communicate in an Open, Honest, & Fruitful way.
- Be a part of the Solution.
- Maintain a character of Integrity.
- Always Be Learning
- Respect and Edify others.
- Be Innovative while striving for Efficiency.

**BGESH IS COMMITTED TO:**

- Integrity in all we say and do!
- Delivering exceptional program management!
- Responding promptly to requests!
- Providing solutions to complete your mission!
- Mitigating risk for our clients!



**BGESH**  
**INCORPORATED**

*A Native American Owned Company*

## **WHY BGESH?**

### **DEDICATED PROGRAM MANAGEMENT**

Friendly, hard-working PMs who show integrity, professionalism, and determination supporting you and your mission.

### **EXCEPTIONAL IN-HOUSE RECRUITING**

Prospering our team and building integrity.  
We know what it takes to put together a great team.

### **POWERFUL TEAM FOCUS**

We want you to have the confidence and peace of mind that we do here at Bgesh, knowing that we have friendly, hard-working team people who show integrity, professionalism, and determination.

### **THE GOLDEN RULE**

We consider excellent service to be of utmost importance. We value ongoing and constant communication with our clients. Our team takes the initiative to assess a need, generate a proactive plan, and provide a cost-effective solution for our clients.

## **MORE REASONS...**

Bgesh, Incorporated understands the challenges our clients face when working with small businesses. We've structured our company to provide an organization that provides many unique advantages:

- \* **DÉBASKÉ | OUR IMPACT PROGRAM—LIVING OUT OUR VISION**
- \* **FINANCIALLY-STABLE BUSINESS**
- \* **GEOGRAPHICALLY-DISPersed OFFICES**
- \* **AVERAGE 16+ YEARS PERSONNEL EXPERIENCE**
- \* **DCAA-COMPLIANT ACCOUNTING SYSTEMS**
- \* **ACCESS VIA 8(A) AND WOMAN OWNED SMALL BUSINESS (WOSB) SET ASIDES AND THE NATIVE AMERICAN INDIAN SMALL BUSINESS ECONOMIC ENTERPRISE (ISBEE) SET ASIDE.**
- \* **10% OF PRE-TAX EARNINGS DONATED DIRECTLY TO THE BGESH FOUNDATION.**

The word "**Bgesh**" in the Potawatomi language means "**hope**".

*We Live & Work by the Golden Rule:  
"Treat Others as You Want to Be Treated."*